

# Ztrack

The Magazine for Z Scale Model Railroading

March/April 2009, Vol. 15, #2

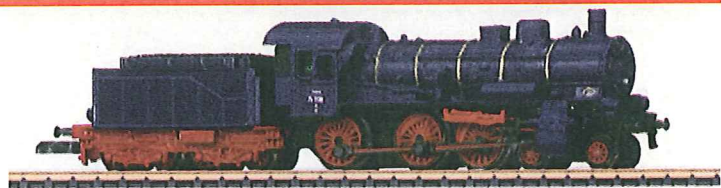
\$6.50 U.S./\$8.50 CAN.

## Istvan Molnar's Western Layout



### *In This Issue ...*

- Installing TCS's Z2 decoder ..... pg. 8
- AZL releases Bettendorf trucks. .... pg. 16
- US Z Lines Europe, OWL Division. .... pg. 17
- Pro-Z releases freight sets. .... pg. 21
- Building Istvan's bakery. .... pg. 28
- Broadwater's Chessie safety cabooses . pg. 43
- And so much more ...*



**Märklin's 2009 New Items ... page 10**

# Istvan Molnar's Western



Aspen Model: Fine Modeltrains and Accessories

**New in Z-Scale**



12-wheel tender, article no.: 30034



Aspen Model Inc., 305 J, Aspen Business Center, Aspen, Colorado 81611  
 Phone: (970) 544-8270, Fax: -8275 - <http://www.aspenmodel.com> - e-mail: [mail@aspenmodel.com](mailto:mail@aspenmodel.com)

**MONON BY FULL THROTTLE**



**A ZTRACK EXCLUSIVE RELEASE**

**WWW.ZTRACK.COM**

# n Layout



Istvan Molnar of Sweden has created a highly dynamic and detailed layout. Based on a western U.S. theme, the layout features numerous highly intricate vignettes within a multi-tiered layout. The layout has a slight 'L' shape with a single lower loop servicing the town, industries, and locomotive maintenance area. The upper loop runs past farms, over dramatic trestles, past small western towns and pulls revenue from a mine complex in the hills.

*Continued on the next page...*



**"Full Throttle" • [dewaa128@aol.com](mailto:dewaa128@aol.com)**



We're big on Z.

[zcentralstation.com](http://zcentralstation.com)

The layout is dominated by locomotives from a number of manufacturers. Märklin, Micro-Trains, American Z Line, FR and Zthek are all represented on the rails. The layout is dominated by steam, with 4-6-0s and Pacifics running the rails. But it is possible to see the massive AC12 cab-forward operating on the layout! Diesels are also making an appearance. Box cab diesels, SW1 switchers, F7s and GP7s are all popular choices. The most modern diesel running is a GP35.

Rolling stock is very much kept to more period pieces. Freight is dominated by offerings from Micro-Trains. These include 40' boxcars, 33' flat cars and 50' mill gondolas. Pennzee three-bay hoppers service the mine. Märklin cabooses and select cars also ride the rails. Passenger service is all Märklin. The mixed combines and old time passenger cars make regular stops at the impressive Micron-Art

MON - SAT. 10-5  
SUN. NOON-5



EXTENDED  
HOLIDAY  
HOURS

I - HO - Z GAUGES AND PARTS

*Ormandy's*



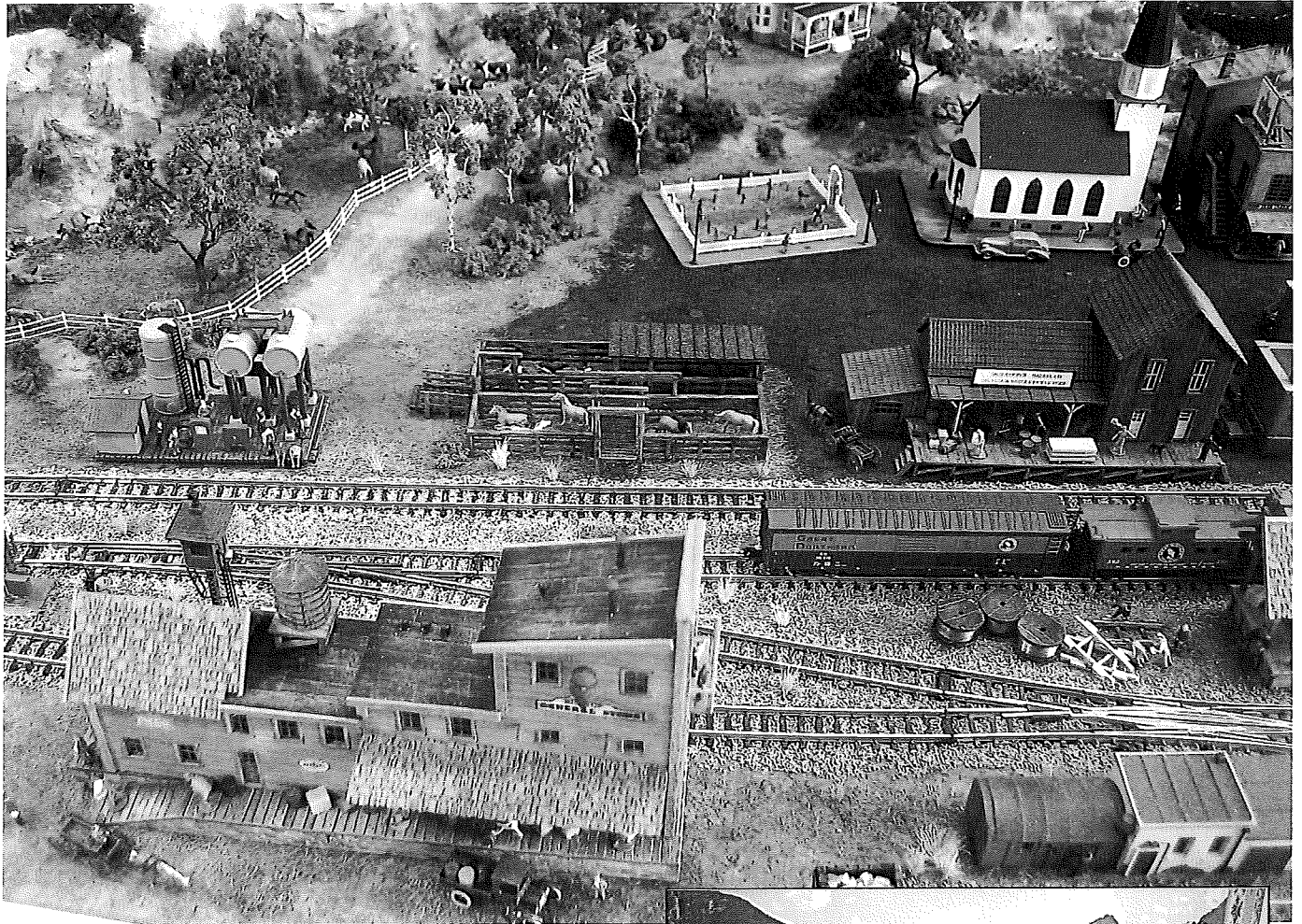
TRAINS & TOYS FOR THE CONNOISSEUR  
SPECIALIZING IN EUROPEAN TRAINS  
BUY & SELL OLD TRAINS



330-722-1019  
330-722-2205 Fax

**JOHN ORMANDY**

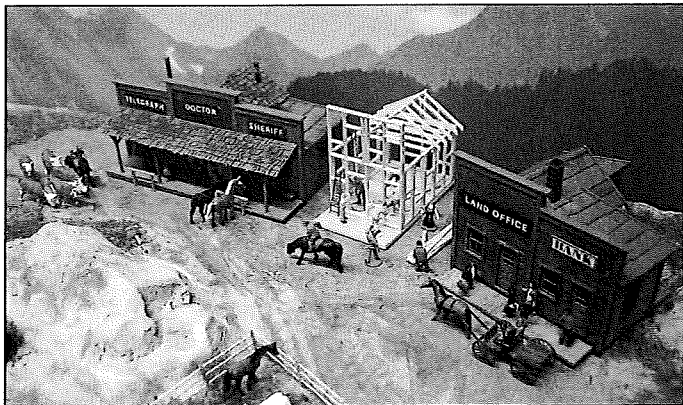
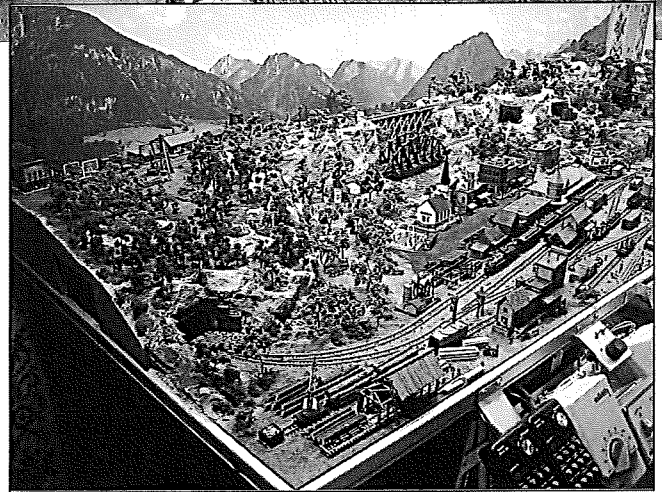
10 PUBLIC SQUARE  
MEDINA, OHIO 44256



Capitol City Depot. Istvan is now beginning to scratch build his own rolling stock. One of his projects is a maintenance of way flat car which will be featured in an upcoming issue of Ztrack Magazine.

Viewing the layout, one will recognize many of the structures on the layout. These are from such prominent Z manufacturers such as Miller Engineering, Micron-Art, Artitec, and Monroe Models. One of the more interesting features of the layout is the number of scratch built structures. See page

*Continued on the next page...*



**WWW.Z-SCALE.NET**  
**CLOSE OUT SALE AT**  
**Casa Royale**

Take an additional **20%** off all prices noted on our web site. Just add zip code shipping & insurance.  
 (805) 492-8777 • E-mail: Richard@Z-Scale.net



28 of this issue for an article on how Istvan creates his little masterpieces!

Details really separate this layout from many others. Everywhere you look, you will find intricate scenes and stories. The vehicles, figures and accessories come from many different manufacturers. Many of the stand out period trucks are from Micron-Art as are the farm wagons. If you can name the Z acces-

## ProZ - One of the first Z scale model passenger trains!

*Now available!*

# Z Scale

Contact your local hobby outlet.

The six car version of the Famous Japanese "Blue Trains," is from ProZ. Pulled by the EF 65 electric locomotive, operation is smooth in all speeds. This train was a sleeper that traveled the length of Japan. All cars are lighted, also headlights and taillights.

**Mokei Imports, Inc.**

**MSRP \$260.00\***

6950 Kingsbury • St. Louis, MO. 63130  
Phone: 314-725-8413 • Fax: 314-725-0239 • e-mail: mokei6950@aol.com

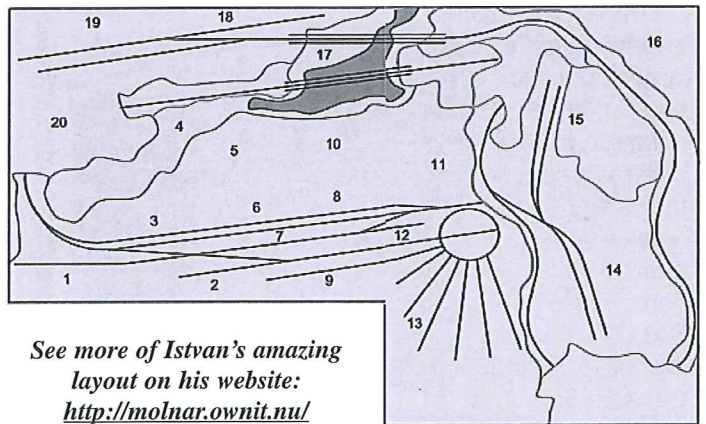
\*Track not included



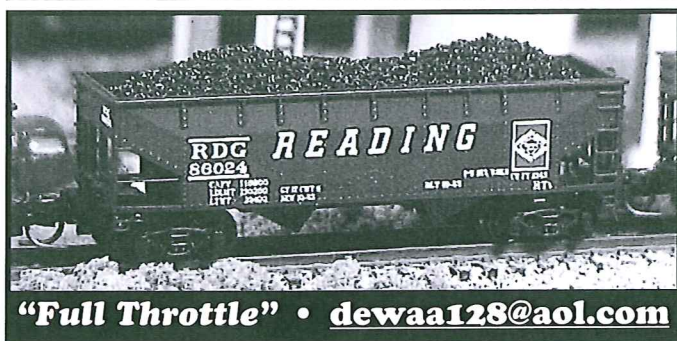
sory manufacturer, likely you will find samples of their offerings on the layout!

The scenery utilizes rock castings and home made trees. Green pastures feed the livestock. Tall grass have been added around the water effects and the layout captures a Western US feel quite nicely.

Istvan's layout is an amazing example of the detail and intricacy that can be applied in Z scale. He has combined unique scratch built structures and commercial kits to create a unified look. The details and craftsmanship of the layout is never ending!



See more of Istvan's amazing layout on his website:  
<http://molnar.ownit.nu/>



**"Full Throttle" • [dewaa128@aol.com](mailto:dewaa128@aol.com)**

## *"Z Train Things"*

**Official Micro-Trains Dealer**  
**Official AZL Dealer**

Loren Snyder  
[ljsnyder@charter.net](mailto:ljsnyder@charter.net)  
 1325 Ramada Ave.  
 Medford, OR 97504

**StoneBridgeDesigns**  
 Manufacturer and  
 maker of fine Z scale trees,  
 hydrocal tunnel portals,  
 abutments, and bridge piers.